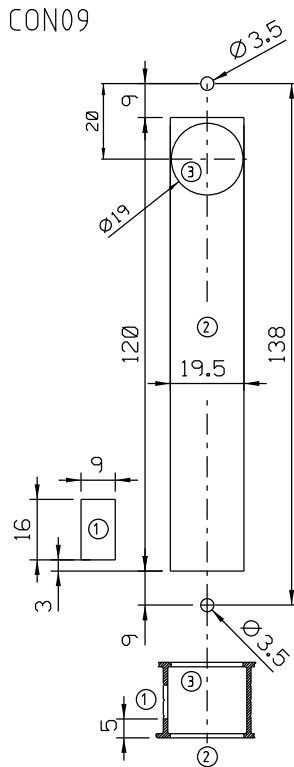
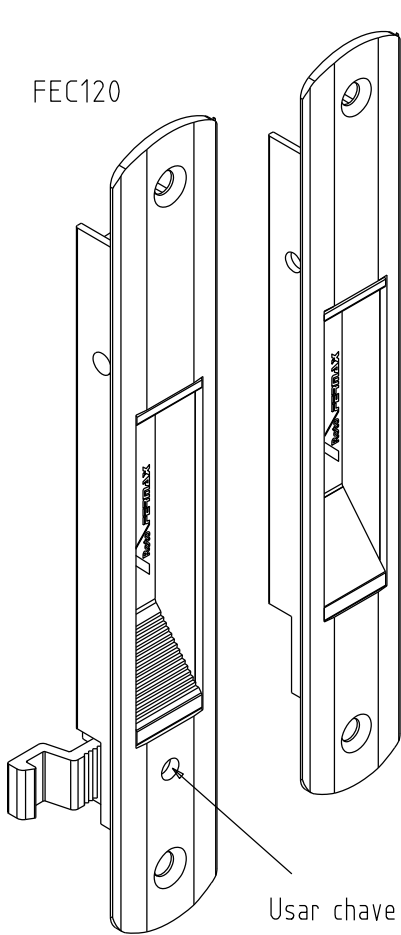
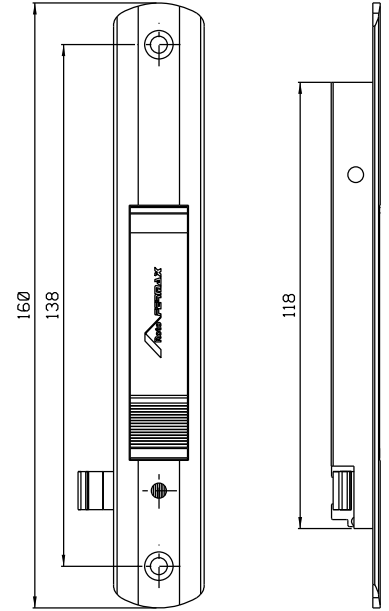
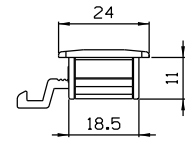


Setembro/2021

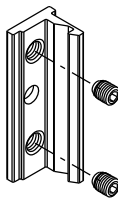
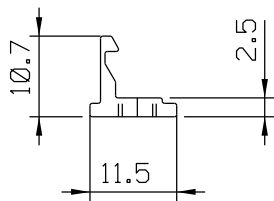


Usinagem - escala 1:2

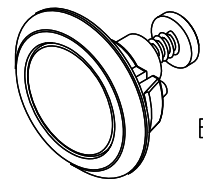
Usar chave Allen 3 mm



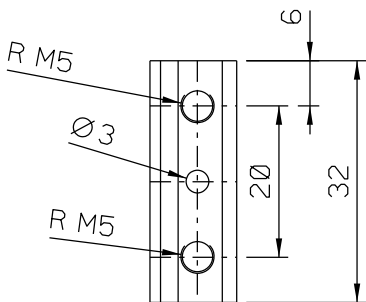
Vistas sem escala



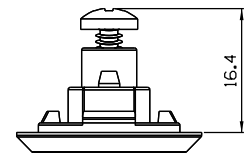
CFE51



BAC02



Vistas - escala 1:1

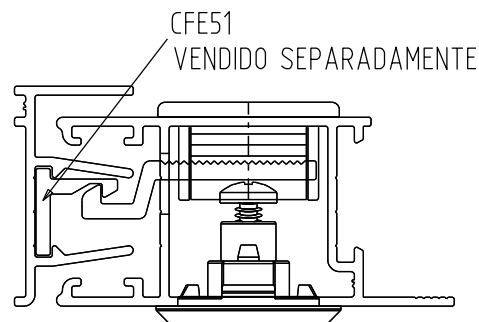


ESCALA 1:1

Medidas em milímetros

Composição

- Base/eixo/lingueta alumínio
- Mola aço
- Parafusos inox
- Contrafecho alumínio



Instalação - escala 1:1