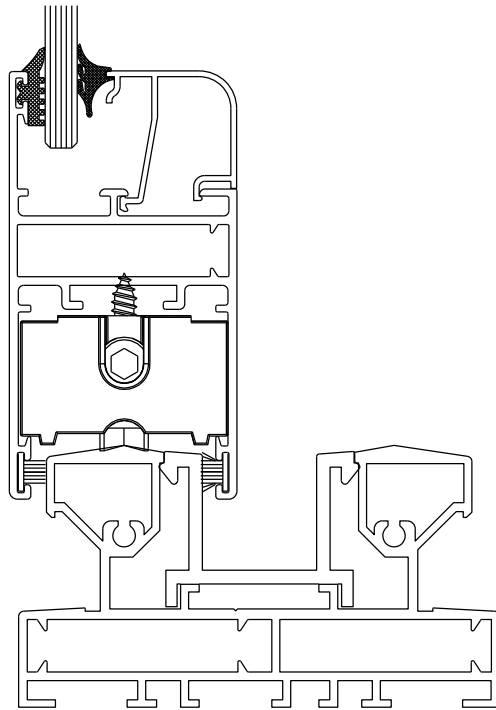
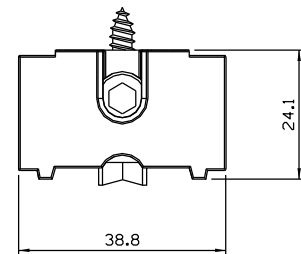
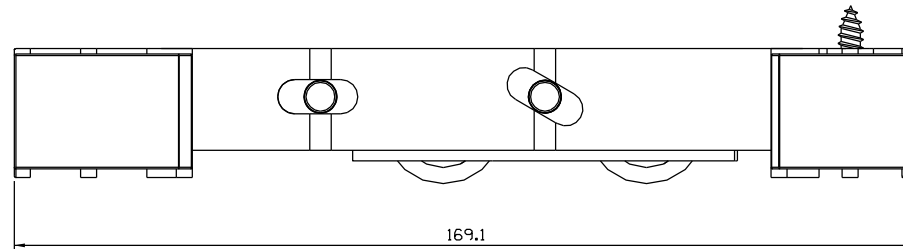
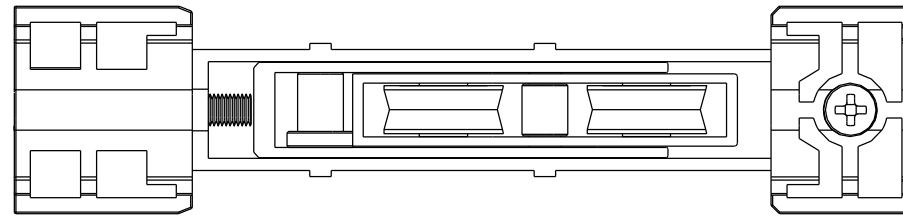
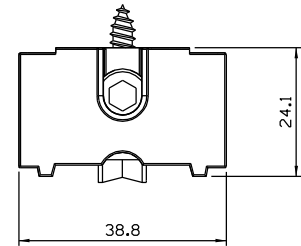
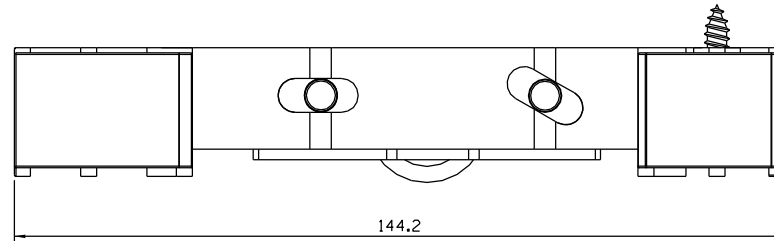
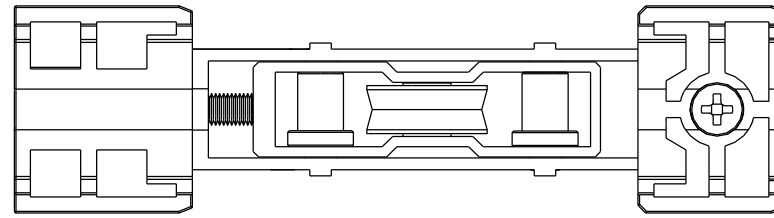


ROL144 simples (150 Kg/folha)
 ROL145 dupla (300 Kg/folha)



■ Instalação: escala 1:1



■ COMPOSIÇÃO

- Cavelete, suporte e eixo da roda alumínio
- Roda com rolamento delrin/aço
- Guias e buchas nylon
- Parafusos de fixação 4,8 x 16 inox
- Parafuso de regulação M6 x 25 inox

■ Vistas: escala 1:1